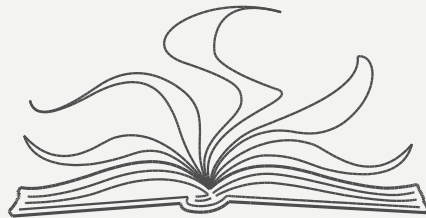


ALACHUA COUNTY LIBRARY DISTRICT



alachua county library district

**2019 ALACHUA COUNTY CITIZENS ACADEMY
MAY 16, 2019**

OVERVIEW

- 12 branches and 2 bookmobiles
- 225 employees
- Library Director Shaney T. Livingston

Core Values:

Diversity of people and ideas

Free and equal access

Excellent and innovative service

Open exchange of ideas





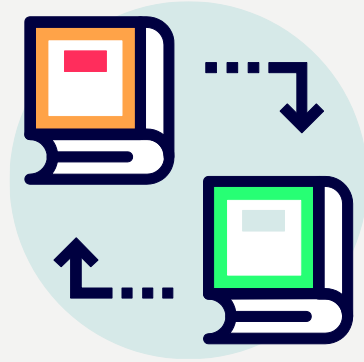
A KEY TO BUILDING A
BETTER COMMUNITY BY
CREATING OPPORTUNITIES TO
PARTICIPATE, CONNECT AND
DISCOVER.

MISSION STATEMENT

2017-2018 HIGHLIGHTS



1.27 million
Library visits



3.89 million
Checkouts/renewals



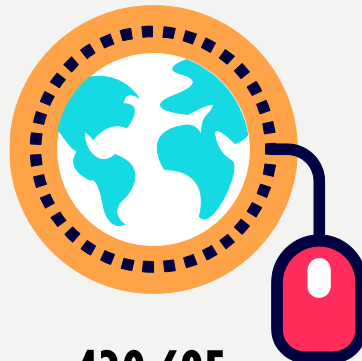
9,155
Programs



219,159
Computer use hours



623
Bookmobile stops



439,685
Wifi connections



129,731
Program participants

HISTORY

1906: Gainesville Public Library opens on West Liberty Street.

1949: Library Board replaced by five-member Advisory Board. Library becomes a city department.

1959: Hawthorne, High Springs and Micanopy Branches open. First bookmobile begins service.

1983: Joint City/County Committee recommends creating an independent taxing district to run library service countywide.





HISTORY

October 1985: Citizens of Alachua County approved an special referendum to create the library independent taxing district ([Chapter 98-502](#)).

“created for the purpose of providing the only library system services and facilities for all citizens of Alachua County...”

LIBRARY STRUCTURE



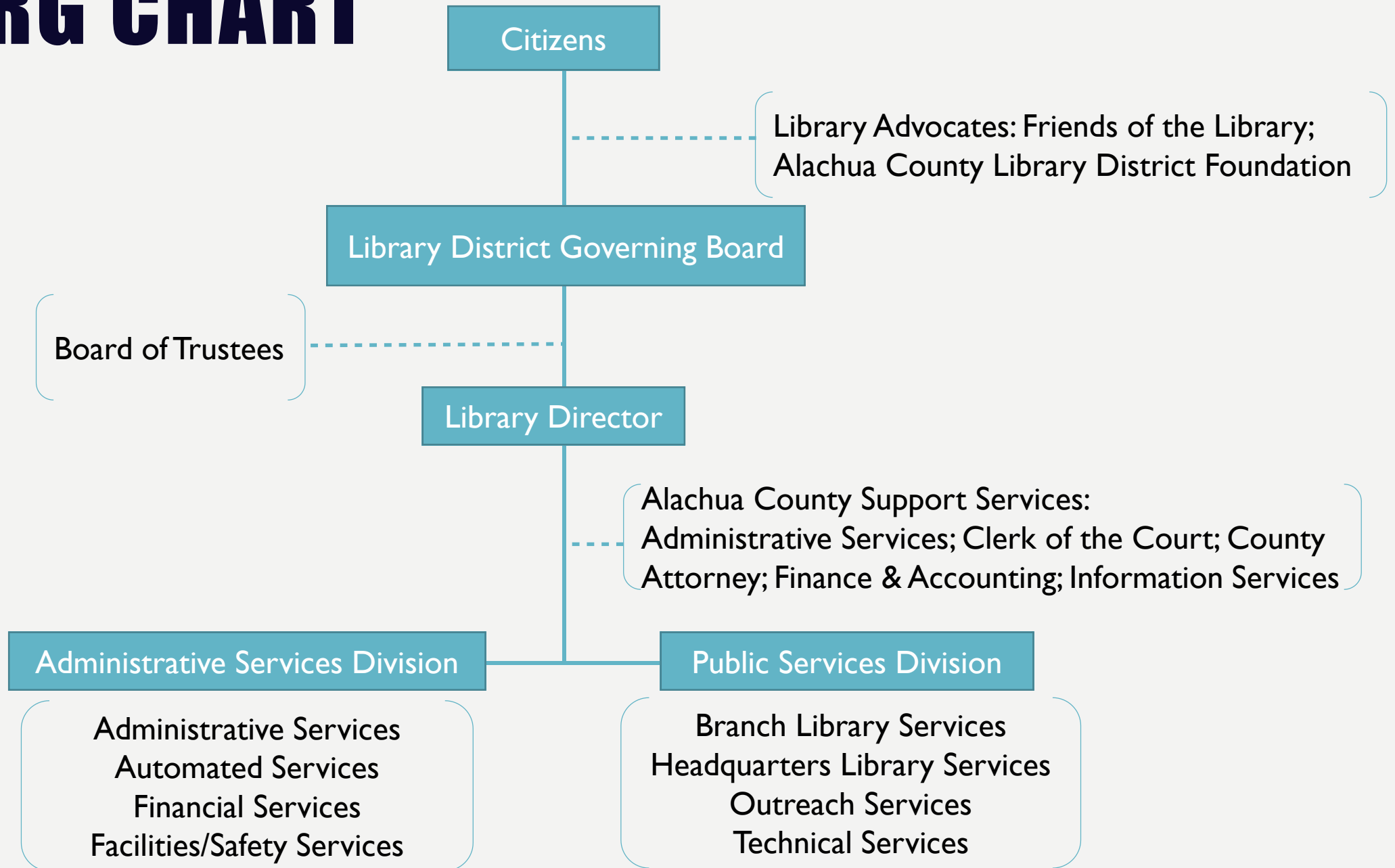
- Governing Board
 - Three Alachua County Commissioners
 - Ken Cornell, Chair; Charles S. Chestnut IV; Marihelen Wheeler
 - Two City of Gainesville Commissioners
 - Adrian Hayes-Santos; Helen K. Warren
 - One School Board Member of Alachua County
 - Dr. Leanetta McNealy, Vice Chair
 - Meetings: 10:30 a.m. second and fourth Thursdays each month, Meeting Room A, Headquarters Branch.

LIBRARY STRUCTURE



- Board of Trustees
 - Three Alachua County seats
 - Dr. Pete Roode, Vice Chair; Larry McDaniel; Susan H. Sonsini
 - Three City of Gainesville seats
 - Dr. Sharlyn Sweeney, Chair; Dr. Bessie G. Jackson; Linda Y. Jackson
 - One League of Cities seat
 - Kim Worley, Waldo City Manager
 - Meetings: 5:30 p.m. first Wednesday each month, Foundation Room, Headquarters Branch.

ORG CHART



WHAT WE DO

Serve the community every day with

Collections

Programs

Community Partnerships

Online Resources

Meeting Rooms

And more!

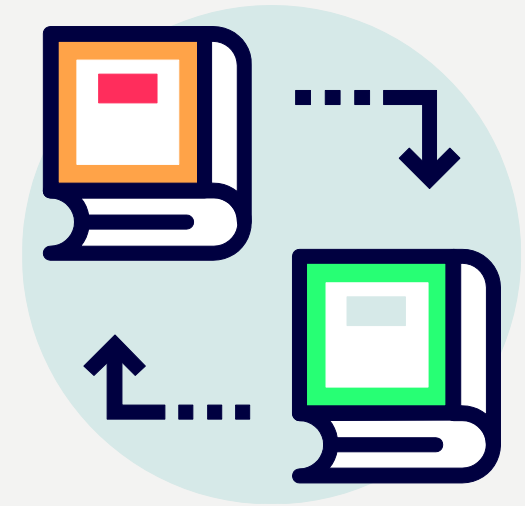


WHO CAN ACCESS THE LIBRARY?


- Library cards are free to all Florida residents or property owners.
- Standard Library Card:
 - Required to borrow materials and for remote access to online resources.
 - Allows access to the internet while in the Library.
 - Adults (18 and older) must provide picture identification and verification of Florida residence.
 - Out-of-state residents who do not own property in Florida may purchase an out-of-state card for \$40.00 for one year or \$20.00 for 6 months.
 - Must renew in person every two years.

CHECK IT OUT

- Card holders can have up to 100 checkouts or holds at a time.
- Eight DVDs at a time.
- Download 5 free songs per week.
- Access dozens of online eSources including Lynda.com, Tutor.com, OverDrive, The New York Times, Heritage Quest Online and more.



3.89 million
Checkouts/renewals



**ACLD DOESN'T
CHARGE
OVERDUE FINES.**

SAY, "WHAT?!"

MEET UP

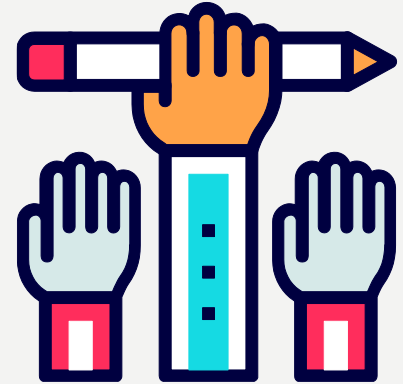
- Library meeting rooms are available to “individuals or community groups whose purposes are civic, cultural, or educational in nature.”
- Must be:
 - Free and open to the public
 - Reserve for one event per month
 - Unscheduled rooms available on first-come, first-served basis
 - Baby showers, birthday parties, graduation celebrations, or other private social events not permitted



10,066
Meeting room
reservations

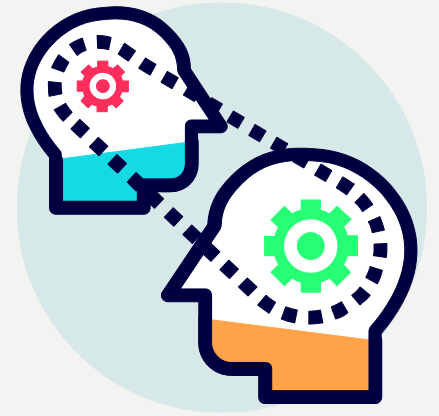
WE ♥ VOLUNTEERS

- Anyone age 12 or older available for 2-4 hours per week.
- Volunteers help with:
 - Check in and re-shelve library materials
 - Process materials for checkout
 - Book repair
 - Program and special event assistance
 - Special projects
 - Clerical Assistance



252 volunteers
18,757 volunteer hours

GREAT FRIENDS



FRIENDS OF THE LIBRARY

- Provides support for programming, education and more.
- Holds Spring and Fall Book Sales to raise money (fun volunteer opportunity).
- Established capital projects fund.
- Offers educational scholarships to staff.

ACLD FOUNDATION

- Emphasis on long-term financial support and planned giving.
- Katherine's Tree – Foundation Endowment Fund
- Snuggle Up Centers at six branches.
- Teen Spaces at five branches.

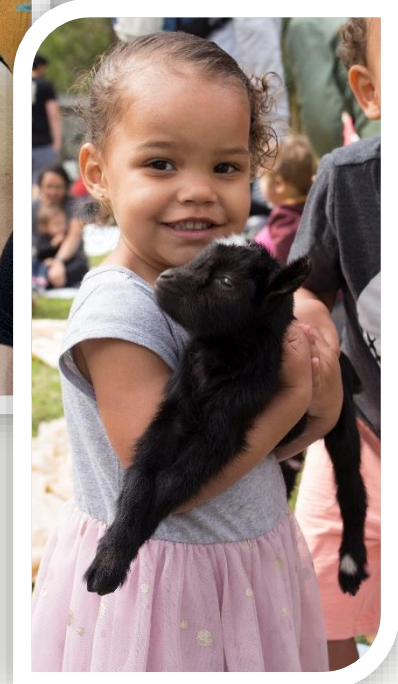
THINKING OUTSIDE THE BOOK

- New ways to explore with hands-on experiences
- ANIMATIONspace
- CREATEspace
- FOODIEspace
- LEGOspace
- MUSICspace
- SEWINGspace
- VIDEOSpace



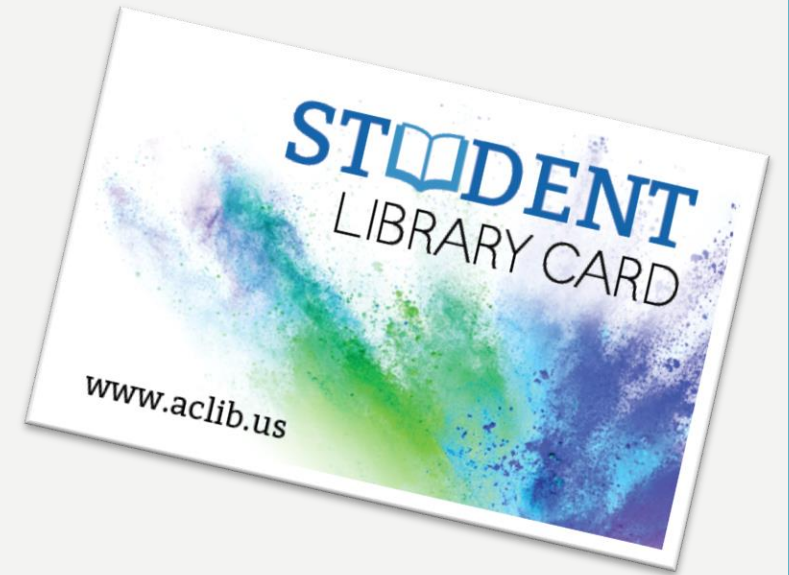
LIVE AT THE LIBRARY


- Author Series
- Local Author Series
- Spring Music Series
- Performances
- Special Guests



ACCESSIBLE TO ALL

- Deliver materials to elderly and homebound.
- Provide materials and programming for incarcerated patrons.
- Distributed Student Library Cards to 26,000 students in Alachua County public schools last year.
- Sensory Storytime for children with sensory integrations challenges.
- Coaching for English Language Learners.
- Re-Entry Partnership Conference and Job Fair to promote job skills.





**THE LIBRARY IS
LIKE A CANDY
STORE WHERE
EVERYTHING IS
FREE.**

-AUTHOR JAMIE FORD



QUESTIONS?